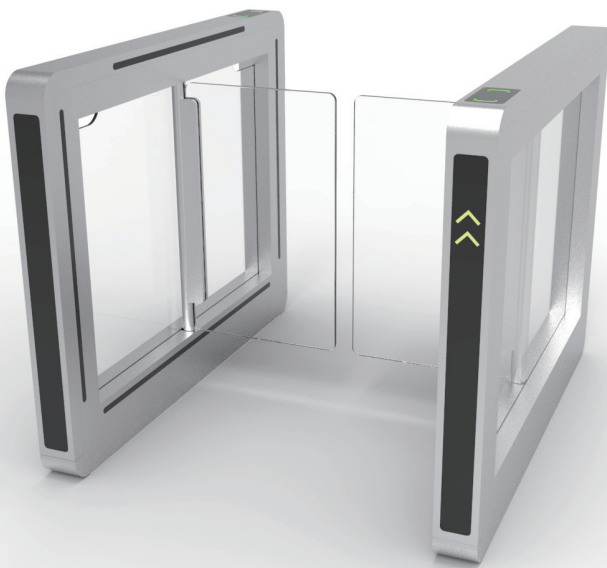


Swing Gate

SFZ-120



SFZ-120 swing gate is designed for accelerated pedestrian flow in high-traffic pedestrian access situation, such as corporate headquarter, bank, university, unmanned store, VIP area in sports arenas etc.

With strict sensor strip detection and precise mechanical system, SFZ-120 swing gate provides secure, effective and rapid access control to prevent unauthorized passage. An access control system within the field of physical security is generally seen as the second layer in the security of a physical structure.

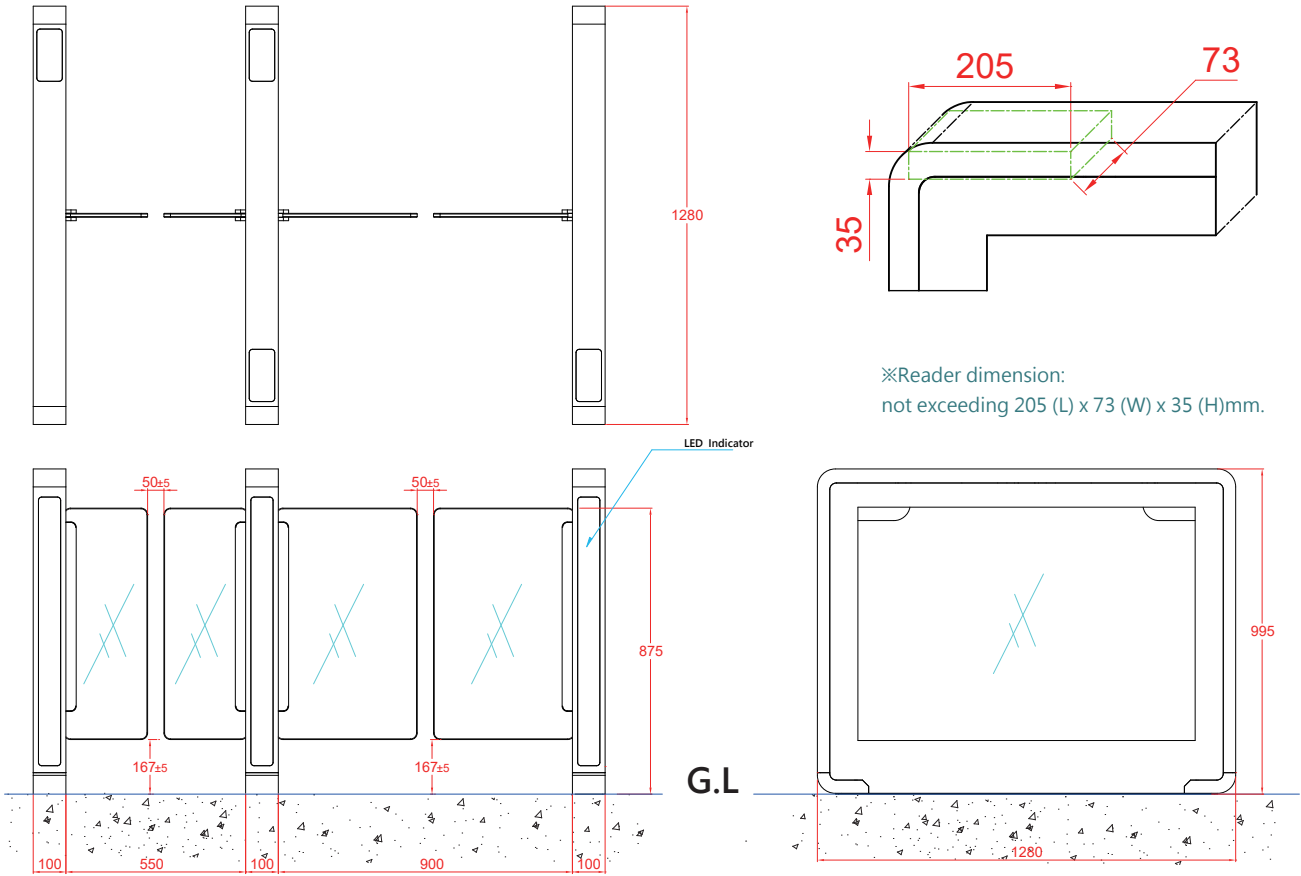
Features

- Smart integration with recognition system or verification system like facial recognition, fingerprint scanner, and all kinds of card reader.
- Accurate detection for tailgating, intrusion, crawling and wrong-way entry, etc.
- With Entry / Exit Bidirectional mode setting. Only one person is allowed to pass each time.
- LED Indicator shows the status of the passage to guide the user through the passage easier.
- In case of intrusion or abnormal status, alarm will be activated and a signal will be sent to the control room at the same time.
- The mechanism can run continuously for a long time and is stable by using high-efficiency brushless motor with sine wave driver.
- The new design - digital controller - can customize the speed and torque output values to accurately achieve the barriers opening and closing movement.
- Built-in high-precision digital codec stroke monitoring can detect abnormal external force changes, add on PWM braking technology, which is stable and reliable.

Technical Data

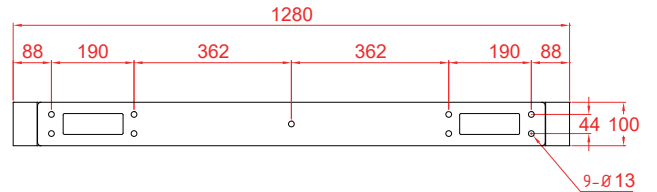
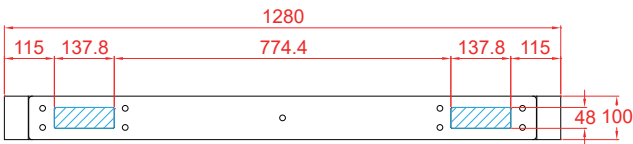
Power Supply	100~240Vac, 50/60 Hz
Dimension	1280(L)x100(W)x995(H)mm
Cabinet	1.5mm Thickness SUS-304 Brushed Stainless Steel Finish (Option : SUS-304)
Barrier	10mm Thickness Tempered Glass (Option : 12mm Polycarbonate Panel)
Barrier Height	875mm
Passage Width	550/900 mm
LED Indicator	Dual Color LED Dot-matrix Display
Sensor	Infrared Sensor Strip
Motor	DC Brushless Servo Motor
Remote Control	RS485 (Option : TCP/IP, Remote Control App)
Flow Rate	40 Passages/Min
Weight	Left/Right Cabinet :90KG Center Cabinet : 120KG
Power Consumption	Stand By 70W / Max.150W
Duty Cycle	100%
Operating Temperature	0~45°C
Relative Humidity	0%~85%RH (No Condensation)
MCBF	≥ 1,500,000 Cycles
MTRR	≤ 30 Minutes
IP Rating	IP43
Certificate	CE
Customization (Option)	Powder Coating or Titanium Plating. Laser Engraving for Glass or Cabinet.
Opening / Closing Speed	1~2.5 sec
Barrier Close Automatically Timer Setting	1~30 sec
Logic Board Voltage	DC 24V
Advanced Security	With pairs of infrared sensors, the gate can achieve anti-trap safety function, and capable of detecting tailgating, intrusion, wrong-way entry.
Passage Modes	The system has Control/Stop/Free Mode
Emergency Safety Mechanism	Barriers will be automatically unlocked when power failure or fire alarm happened.
Microprocessor Controller	Manual settings are available by LCD display. Support continuous open signal input memory. Support RS485 communication interface. Support dry-contact I/O interface.
8 digit Counter	Built in the machine for easy maintenance to check Entry/Exit swing operation frequency.

Dimension (unit : mm)



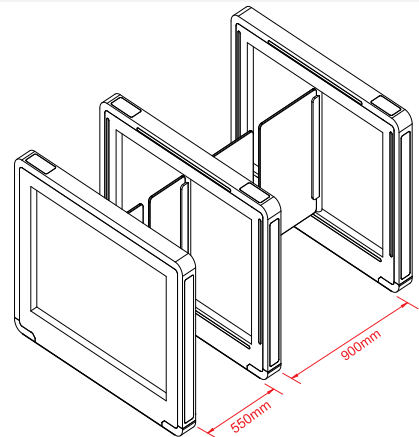
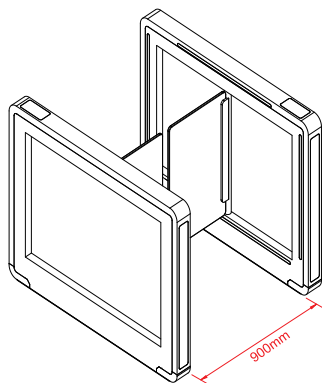
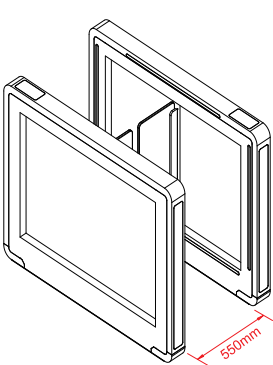
Top View/ Front View

Side View



Installation Drawing-Conduit Holes

Installation Drawing-Fixing Holes



Standard Lane SFZ-120

Wide Lane SFZ-120

Multiple Lanes SFZ-120

